

**Agilent E5052BU Option 018  
Hard Disk Drive Kit**

# **User's Guide**

**Third Edition**



**Manufacturing No. E5052-90222**

**April 2009**

---

## Notices

The information contained in this document is subject to change without notice.

This document contains proprietary information that is protected by copyright. All rights are reserved. No part of this document may be photocopied, reproduced, or translated to another language without the prior written consent of the Agilent Technologies.

© Copyright 2007, 2008, 2009 Agilent Technologies

---

## Manual Printing History

The manual's printing date and part number indicate its current edition. The printing date changes when a new edition is printed. (Minor corrections and updates that are incorporated at reprint do not cause the date to change.) The manual part number changes when extensive technical changes are incorporated.

|               |                |
|---------------|----------------|
| May 2007      | First Edition  |
| December 2008 | Second Edition |
| April 2009    | Third Edition  |

---

## Typeface Conventions

|  |   |
|--|---|
| <b>Sample (bold)</b>   | Boldface type is used when a term is defined or emphasis.   |
| <i>Sample (Italic)</i>   | Italic type is used for emphasis.   |
| <span style="border: 1px solid black; padding: 2px;">Sample</span> key | Indicates a hardkey (key on the front panel or external keyboard) labeled "Sample." "key" may be omitted.   |
| <b>Sample</b> menu/button/box  | Indicates a menu/button/box on the screen labeled "Sample" which can be selected/executed by clicking. "menu," "button," or "box" may be omitted. |
| <b>Sample</b> block/toolbar  | Indicates a block (group of hardkeys) or a toolbar (setup toolbar) labeled "Sample."  |
| <b>Sample 1 - Sample 2 - Sample 3</b>                                  | Indicates a sequential operation of <b>Sample 1</b> , <b>Sample 2</b> , and <b>Sample 3</b> (menu, button, or box). "-" may be omitted.           |

---

# **1** **General Information**

This chapter describes the Hard Disk Drive Kit, contents of the kit, and required tools to install the Option 018 into the Agilent E5052B.

## **Option 018 Hard Disk Drive Kit**

The purpose of this kit is to install the option 018 into the Agilent E5052B.

---

## **Contents of the Agilent E5052BU Option 018 Hard Disk Drive Kit**

The kit includes the parts listed in Table 1-1. If anything is missing, contact the nearest Agilent Technologies office.

**Table 1-1**

**Contents of the Agilent E5052BU Option 018 Hard Disk Drive Kit**

| <b>Description</b>           | <b>Qty.</b> |
|------------------------------|-------------|
| Upgrade Manual (This manual) | 1           |
| HDD Assembly                 | 1           |

---

## **2** **Option Installation**

This chapter describes the procedure to install the option 018 into the Agilent E5052B.

## Introduction

This chapter describes the procedure to install Option 018 into the E5052B. The procedure consists of the following items.

- Installation Requirement
- Saving System calibration Data from Removable Hard Disk to USB Pen Drive
- Removing Removable Hard Disk
- Mounting Removable Hard Disk
- Initial Registration of E5052B
- Calibration of the Touch Screen
- Recalling System Calibration Data from USB Pen drive to Removable Hard Disk

---

## Procedure

### Installation Requirement

- 5188-4426 Key for Hard Disk Carrier
- USB Pen Drive (Over 512MB)

## **Saving System calibration Data from Removable Hard Disk to USB Pen Drive**

The following is a description of the procedures to save the system calibration data stored in the removable hard disk to a USB Pen drive.

- Step 1.** Exit the measurement window.  
**System > Service Menu > Administrator Menu > Exit E5052B > OK**
- Step 2.** Insert a USB Pen drive into the USB port in front panel.
- Step 3.** Open **D:\Recovery** drive.
- Step 4.** Click **.D:\syscal** from the explorer.
- Step 5.** Select **Edit - Copy** from menu bar of the explorer.
- Step 6.** Click the USB Pen drive of the explorer.
- Step 7.** Select **Edit - Paste** from menu bar of the explorer.
- Step 8.** Click **.D:\limit** from the explorer.
- Step 9.** Select **Edit - Copy** from menu bar of the explorer.
- Step 10.** Click the USB Pen drive of the explorer.
- Step 11.** Select **Edit - Paste** from menu bar of the explorer.
- Step 12.** Turn off the E5052B, and then remove the cord from the outlet before removing the Removable Hard Disk.

## Removing Removable Hard Disk

Follow the steps below to remove a removable hard disk.

---

**CAUTION**

---

Before removing a hard disk, you *must* turn off the unit's power and then disconnect the power cord from the outlet.

- Step 1.** Turn off the power.
- Step 2.** Insert the key in the lock and turn anti-clockwise.
- Step 3.** Open the screw in clockwise direction.
- Step 4.** Press the button under direction.
- Step 5.** Remove the hard disk.

## Mounting Removable Hard Disk

Follow the steps below to mount a removable hard disk.

- Step 1.** Insert the hard disk into the slot.
- Step 2.** Turn the screw in anti-clockwise direction until it is locked.
- Step 3.** Turn the key to the right until it is locked.
- Step 4.** Remove the key.
- Step 5.** Turn on the E5052B.
- Step 6.** After restart, the screen for initial registration appears. Execute initial registration. For information on the execution procedure, refer to "Initial Registration Procedure (HDD Revision: NM321 or above)" on page 27 for HDD revision: NM321 or above. If HDD revision is NM320 or below, refer to "Initial Registration Procedure (HDD Revision: NM321 or above)" on page 27.



## Recalling System Calibration Data from USB Pen drive to Removable Hard Disk

The following is a description of the procedures to copy the system calibration data stored in the USB Pen drive to the removable hard disk.

- Step 1.** Exit the measurement window.  
**System > Service Menu > Administrator Menu > Exit E5052B > OK**
- Step 2.** Insert a USB pen drive in to the USB port in front panel.
- Step 3.** Open **D:\Recovery** drive.
- Step 4.** Click **syscal** folder in the USB Pen drive from the explorer.
- Step 5.** Select **Edit - Copy** from menu bar of the explorer.
- Step 6.** Click the **D:\** of the explorer.
- Step 7.** Select **Edit - Paste** from menu bar of the explorer.
- Step 8.** Click **limit** folder in the USB Pen drive from the explorer.
- Step 9.** Select **Edit - Copy** from menu bar of the explorer.
- Step 10.** Click the **D:\** of the explorer.
- Step 11.** Select **Edit - Paste** from menu bar of the explorer.
- Step 12.** Restart E5052B

## System Recovery

By executing system recovery, you can return the system of the E5052B (the Windows operating system and the firmware) to the factory state (at the time of purchase \*1).

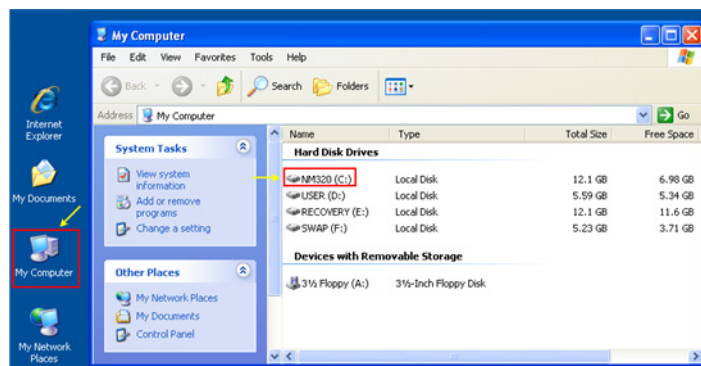
### NOTE

System recovery is a function of Windows and not a function of the E5052B Firmware.

The system recovery procedure is different in accordance with the HDD revision. The HDD revision can be confirmed using the following procedure:

**Step 1.** In E5052B, from Windows Start Menu, click on My Computer.

**Step 2.** The volume label for C: drive is displayed in Hard Disc Drive area.



### CAUTION

Strictly follow the steps described below. If you do any operation other than the following steps, the system may not be recovered.

## Types of system recoveries

The following 2 types of system recoveries are available.

Factory recovery

Returns the contents of the C drive to the factory state.

User recovery (available only when the HDD revision is NM320 or below)

Returns the contents of the C and F drives to a user-specified state. To use this function, you must prepare for recovery in advance. For information on the preparation, see “Procedure to create the user backup image (only available when HDD Revision is NM320 or below)” on page 16 for information on the execution, see “Procedure to execute the user recovery function (only available when HDD Revision is NM320 or below)” on page 23.

\*1. If the hard disk failed and has been replaced after purchase, the state when the replacement was performed is recovered.

## Notes on executing the factory recovery function

Executing the factory recovery function causes the following conditions:

- In addition to the Windows operating system and the firmware, the following settings of the E5052B are returned to the factory state.
  - Network setting
  - GPIB setting
  - Printer setting
- The driver for the supported printer installed after purchase is deleted.
- You need to execute initial registration again.

Files you created using the save function (files in the F drive) are not affected, but we recommend backing them up before executing system recovery for precautionary purposes. For more information on backup, refer to “Backing Up the Data” as described in E5052B Online Help.

## Procedure to execute the factory recovery (HDD Revision: NM321 or above)

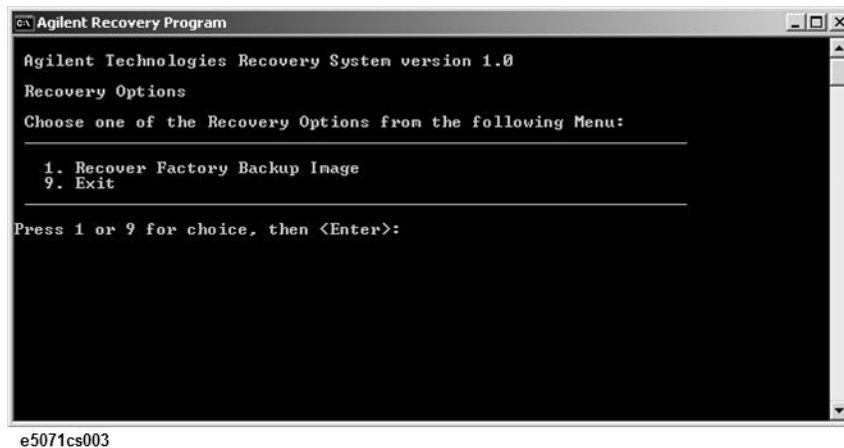
---

**NOTE** The recovery function for Factory image is only loaded.  
The User back up function is not available.

---

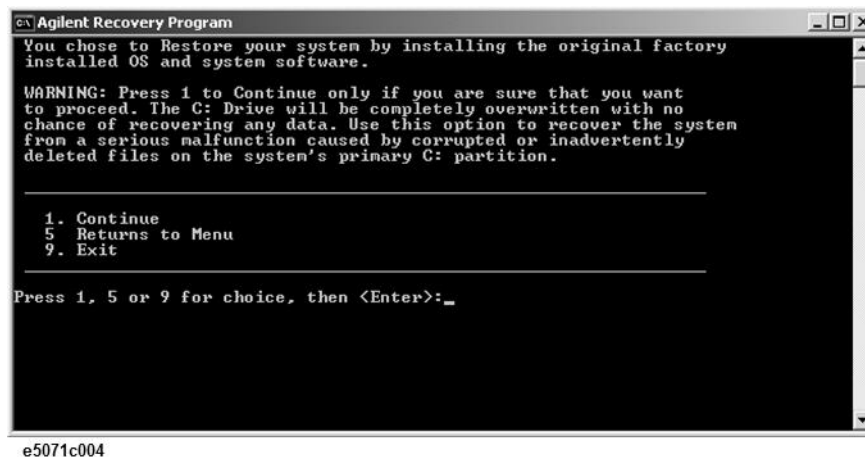
- Step 1.** Turn ON the E5052B.
- Step 2.** The boot option is displayed. Use the downward arrow key to select the “Agilent Recovery Solution” and press Enter
- Step 3.** Windows PE starts up and “Agilent Recovery Program” window is displayed. Press 1, and then press Enter.

Figure 2-1 Agilent Recovery Program(1/1)



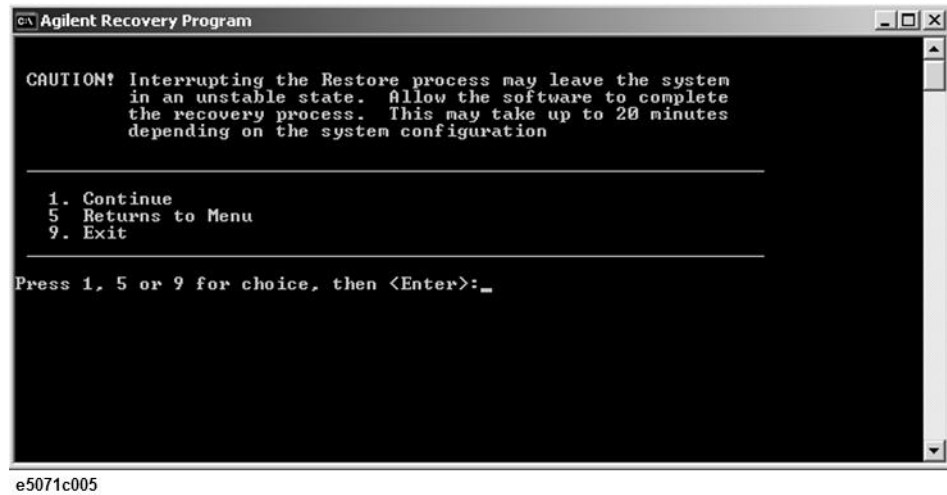
- Step 4.** A warning message is displayed. Press 1, and then press Enter.

Figure 2-2 Agilent Recovery Program(1/2)



- Step 5.** Caution is displayed. Press 1, and then press Enter.

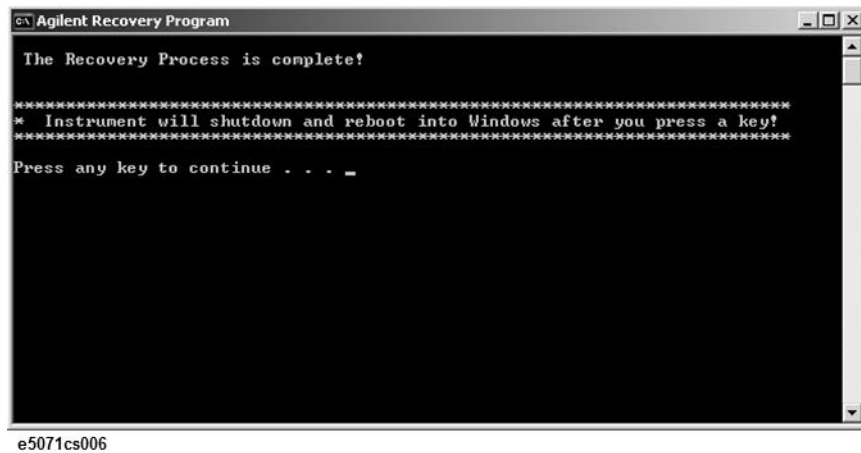
Figure 2-3 Agilent Recovery Program(1/3)



Step 6. Recovery function is performed.

Step 7. A message box appears after the completion of recovery process. Press any key to continue.

Figure 2-4 Agilent Recovery Program(1/4)



Step 8. When factory recovery is finished, E5052B restarts.

Step 9. After restart, the screen for initial registration appears. Execute initial registration. For information on the execution procedure, refer to “Initial Registration Procedure (HDD Revision: NM321 or above)” on page 34.

### Procedure to execute the factory recovery (HDD Revision: NM320 or below)

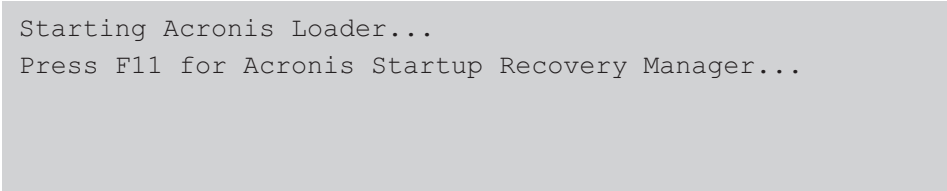
This section describes how to return the contents of the C drive to the factory state.

---

**NOTE** You need a keyboard for this operation.

---

- Step 1.** Shut down the E5052B.
- Step 2.** Disconnect all of the USB device from the USB ports.
- Step 3.** Connect the keyboard to the E5052B.
- Step 4.** Press the standby switch of the E5052B to turn it on.
- Step 5.** When the screen as shown in the figure below appears, press **F11** of the keyboard.



```
Starting Acronis Loader...  
Press F11 for Acronis Startup Recovery Manager...
```

e5071cse1055

---

**CAUTION** Press F11 only once. If you press F11 twice or more and a screen which is not mentioned in this manual appears, reboot the instrument and restart the process from the first.

---

---

**NOTE** After several seconds, the next screen appears automatically even if you do not press any key, so do not miss it.

---

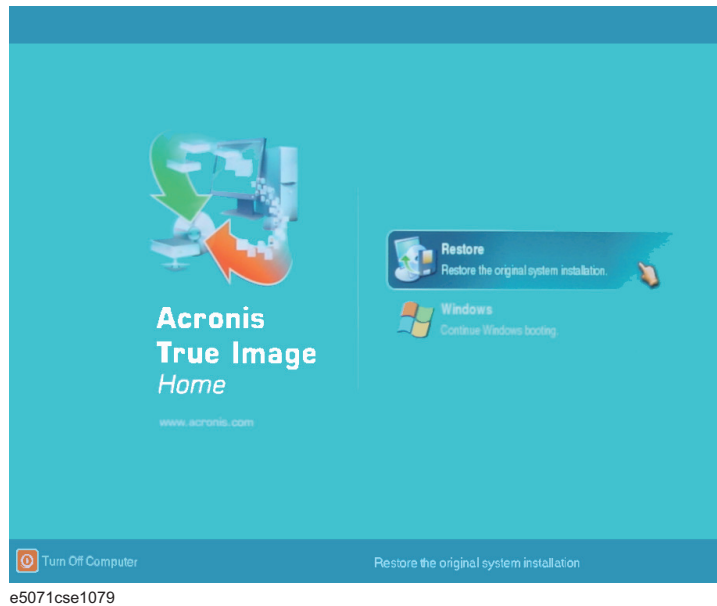
---

**NOTE** After Step 5, if the E5052B freezes with the cursor does not blink, turn the power off and remove unnecessary USB devices. Then, replace the keyboard with a PS/2 keyboard to execute the process again.

---

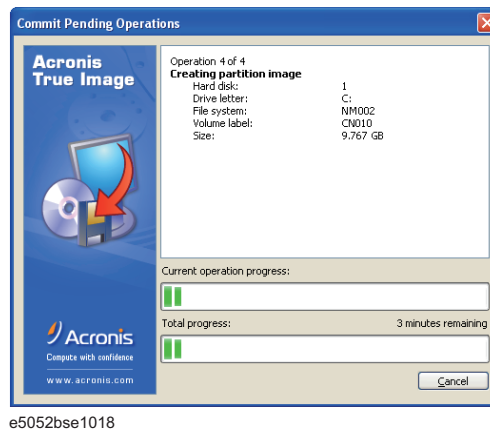
**Step 6.** Select **Restore**.

**Figure 2-5**                    **Activate Acronis Startup Recovery Manager**



**Step 7.** A confirmation dialog box is displayed. Push the enter to select **Yes** to start the recovery of the factory backup. The recovery takes a few minutes depending on the amount of data.

**Figure 2-6**                    **Recover Factory Backup**



**Step 8.** When the recovery is finished, push the enter select OK. The E5052B restarts automatically.

**Step 9.** After restart, the screen for initial registration appears. Execute initial registration. For information on the execution procedure, refer to “Initial Registration Procedure (HDD Revision: NM320 or below)” on page 37.

**Step 10.** Execute the calibration of the touch screen. For information on the execution procedure, refer to “Calibration of the Touch Screen” on page 39.

---

**CAUTION**

---

Never turn off the power during the system recovery because doing so may cause serious damage to the E5052B.

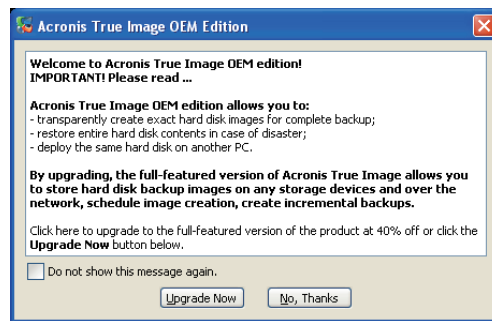
### Procedure to create the user backup image (only available when HDD Revision is NM320 or below)

This section describes how to create the user backup image. The C and F drives' contents saved in this procedure are recalled when the user recovery function is executed.

- Step 1.** Close the E5052B application by pressing **System** > Service Menu > Administrator Menu > Exit E5052B > OK.
- Step 2.** Close all other applications you currently open.
- Step 3.** From the Windows start menu, select All Programs > Acronis > Acronis True Image.
- Step 4.** Click “No, Thanks” button.

Figure 2-7

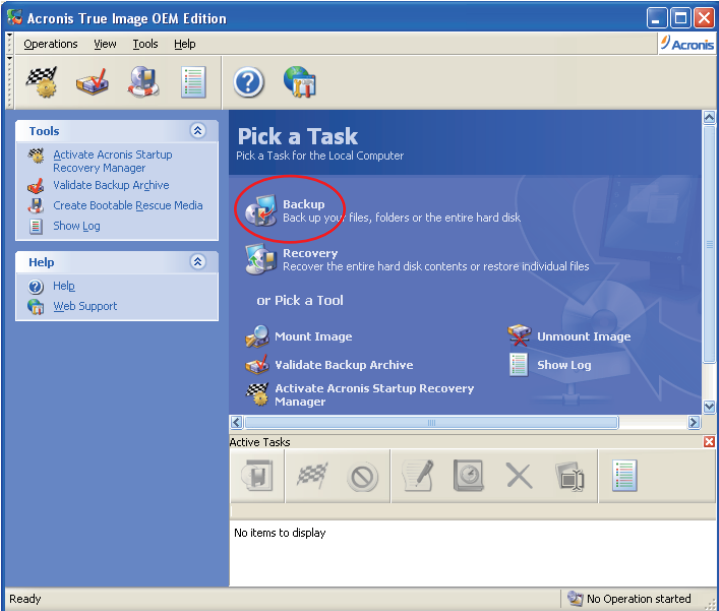
#### Recover User Backup



e5071cse1080

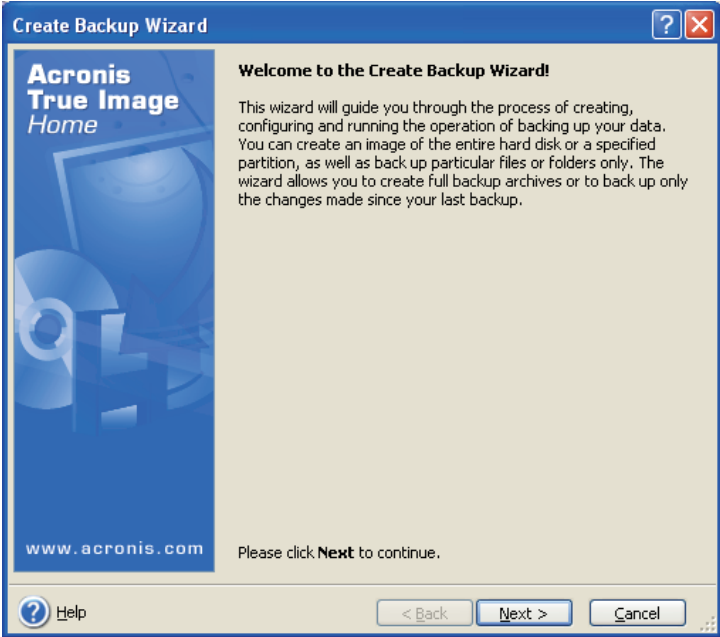


**Step 5. Click Backup**



e5071cse1125

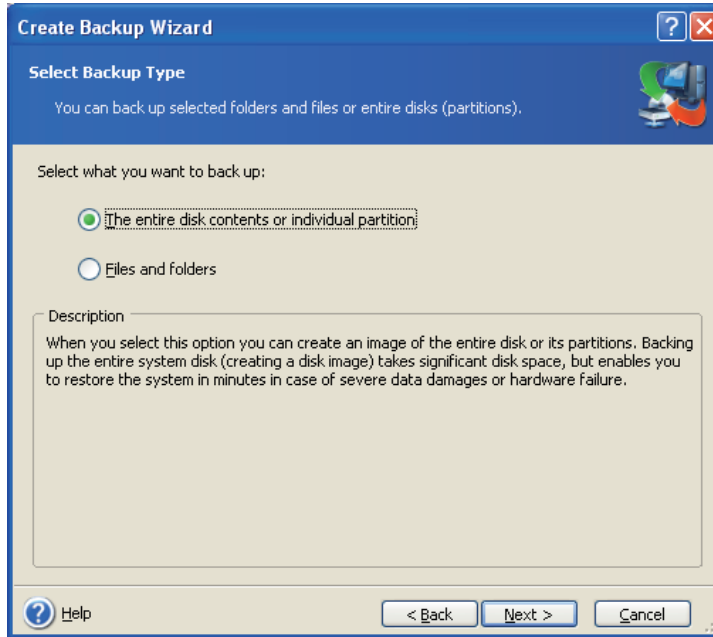
**Step 6. Click Next button.**



e5071cse1126

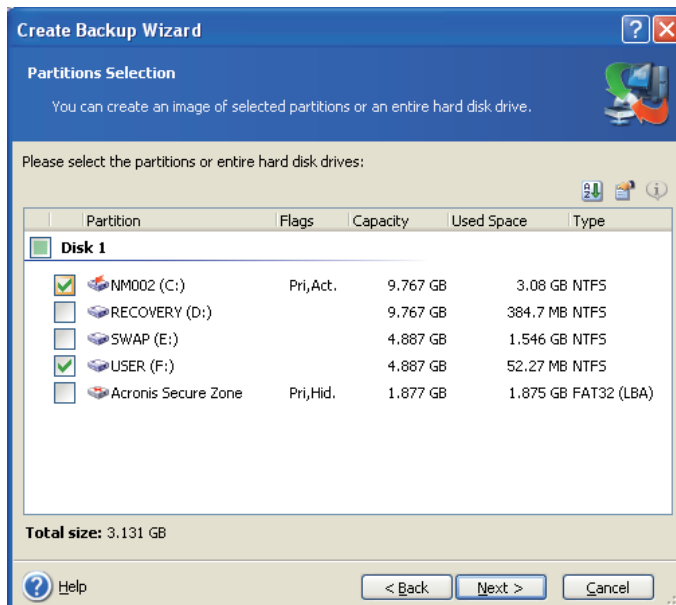
## Option Installation System Recovery

**Step 7.** Select “The entire disk contents or individual partition,” then click **Next** button.



e5071cse1127

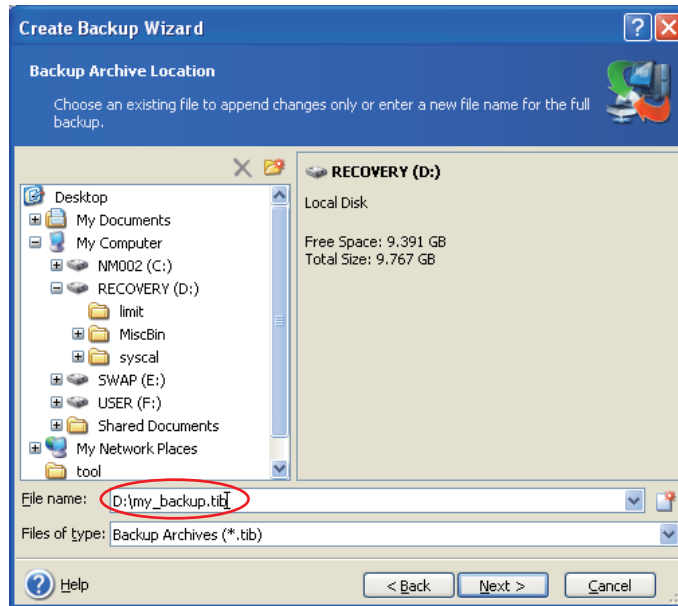
**Step 8.** Select the C drive and F drive.



e5052bse1019

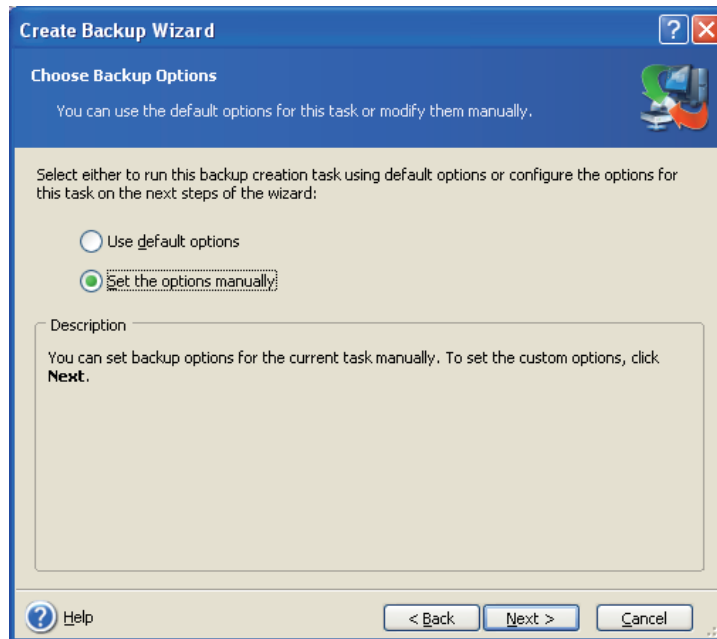
**Step 9.** Select the destination folder and input a file name, then click **Next** button. It is recommended to save the file to a directory which has enough space like the D drive. Also,

never save the contents of the drive to the C, E or F drive.



e5052bse1020

**Step 10.** Select “Set the options manually” and click **Next** button.

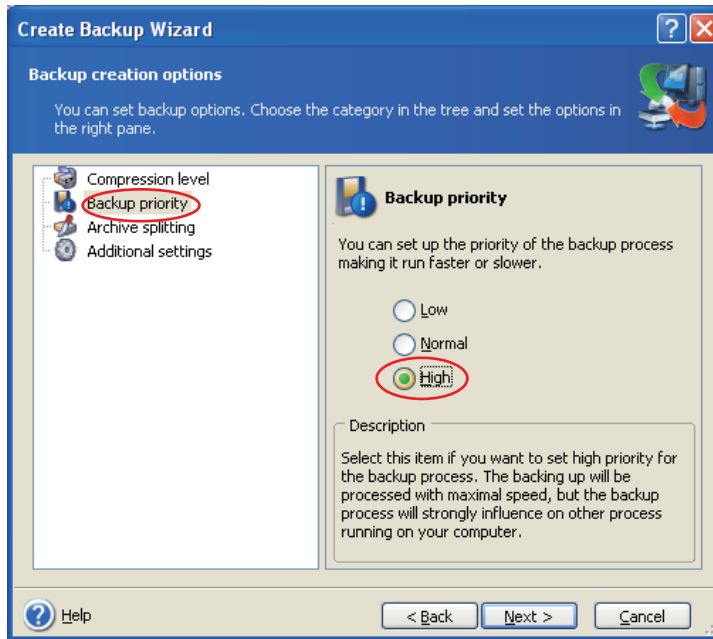


e5071cse1130

**Step 11.** Select “Backup priority” in the left field and “High” in the right field, then click **Next**

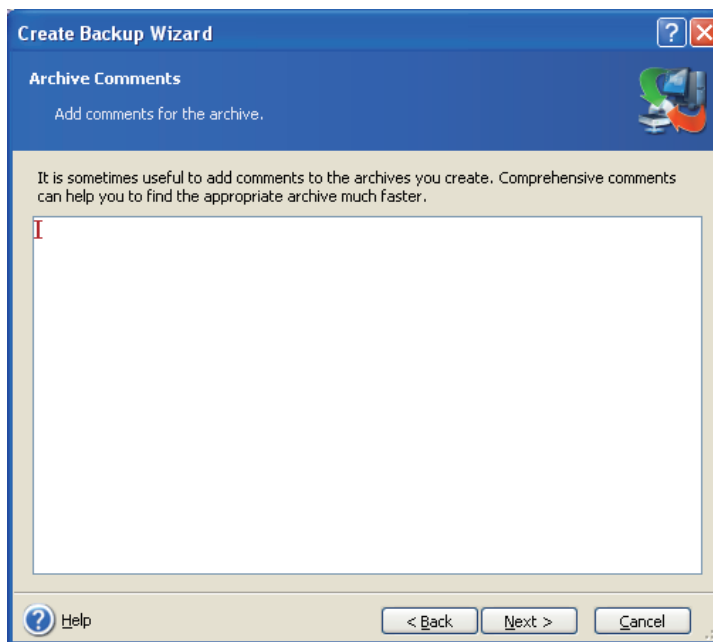
## Option Installation System Recovery

button.



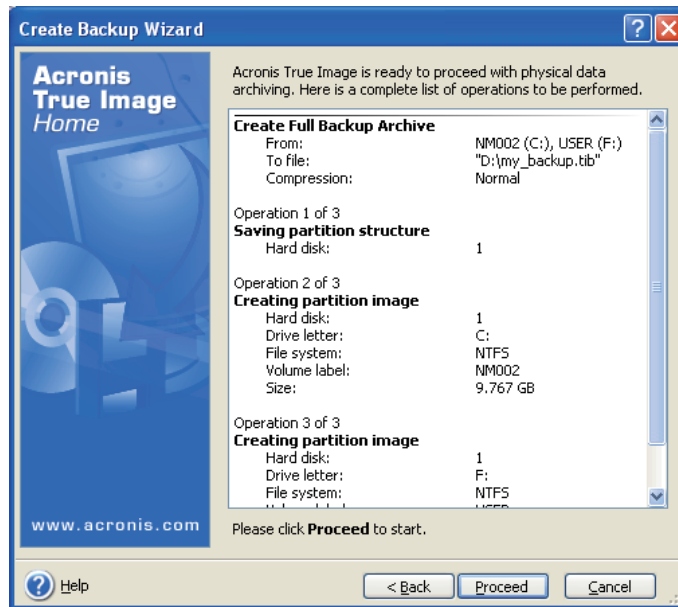
e5071cse1131

**Step 12.** If necessary, input comments and click **Next** button. The comments can be omitted.



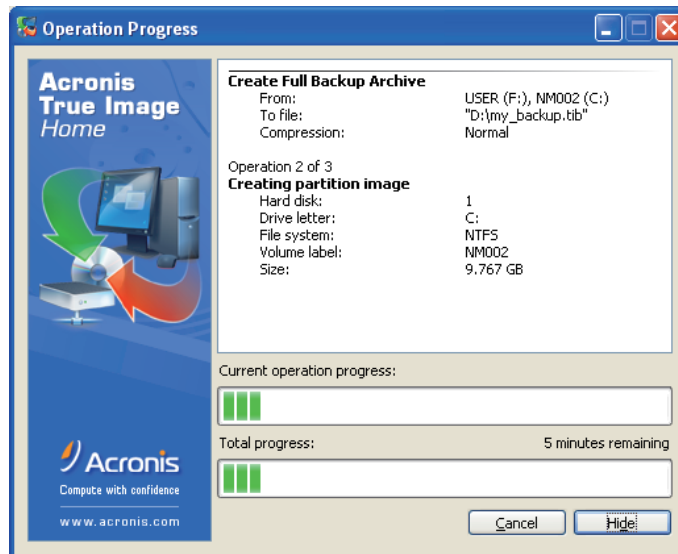
e5071cse1132

Step 13. Click **Proceed** button.



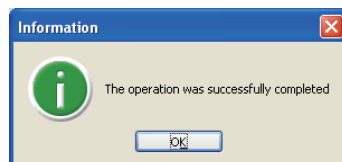
e5052bse1021

Step 14. The following screen appears during backup.



e5052bse1022

Step 15. The following screen appears when the user backup image was created. Click **OK**.



e5052bse1023

---

**CAUTION**

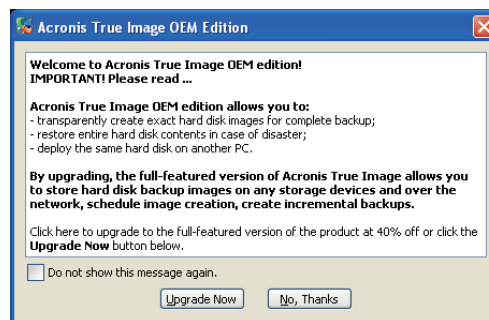
---

Never turn off the power during creating the user backup image because doing so may cause serious damage to the E5052B.

## Procedure to execute the user recovery function (only available when HDD Revision is NM320 or below)

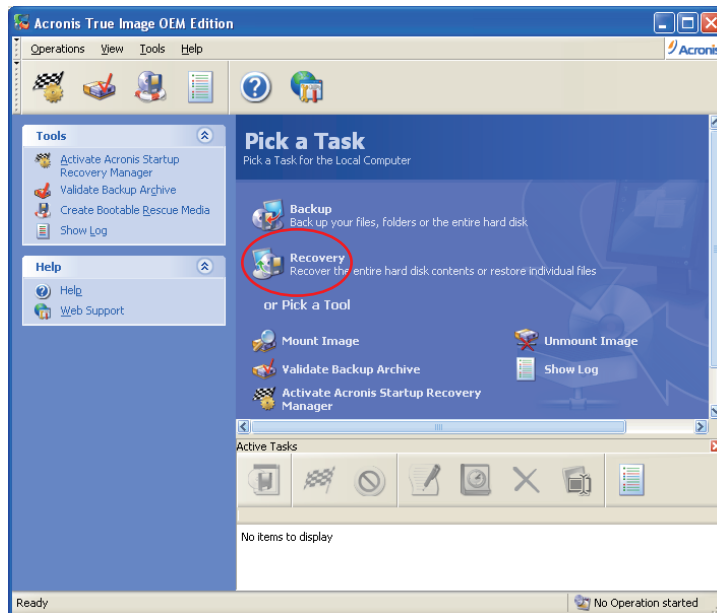
Returns the contents of the C and F drives to a user-specified state. To use this function, you must create the user backup image in advance. For more information, see the description “Procedure to create the user backup image (only available when HDD Revision is NM320 or below)” on page 16.

- Step 1.** Close the E5052B application by pressing **System** > Service Menu > Exit.
- Step 2.** Close all other applications you currently open.
- Step 3.** From the Windows start menu, select All Programs > Acronis > Acronis True Image.
- Step 4.** Click “No, Thanks” button.



e5071cse1080

- Step 5.** Click **Recovery**.



e5071cse1136

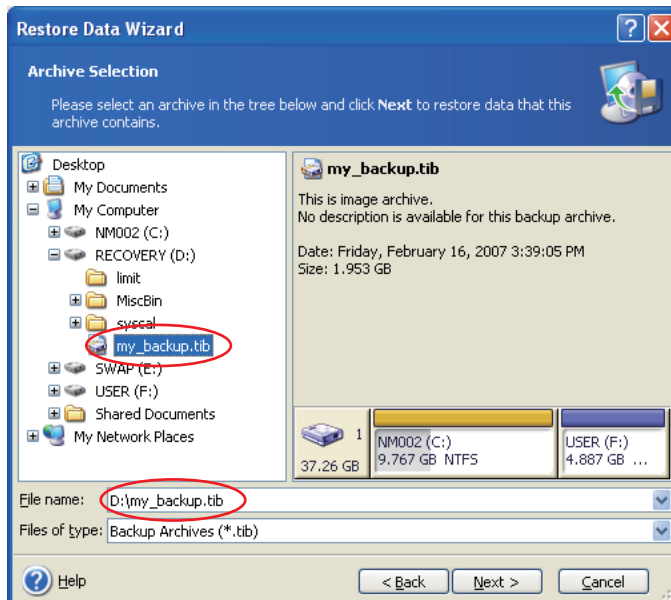
## Option Installation System Recovery

Step 6. Click **Next** button.



e5071cse1137

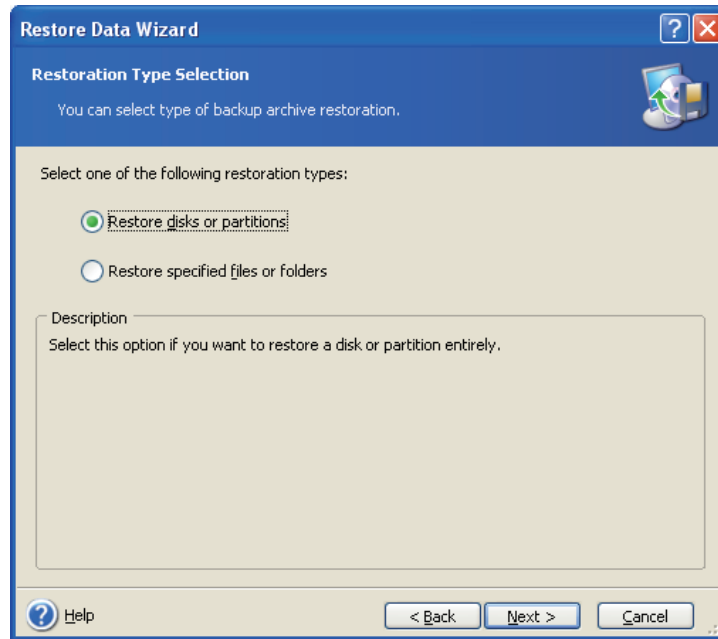
Step 7. Select the saved backup image file, then click **Next** button.



e5052bse1024

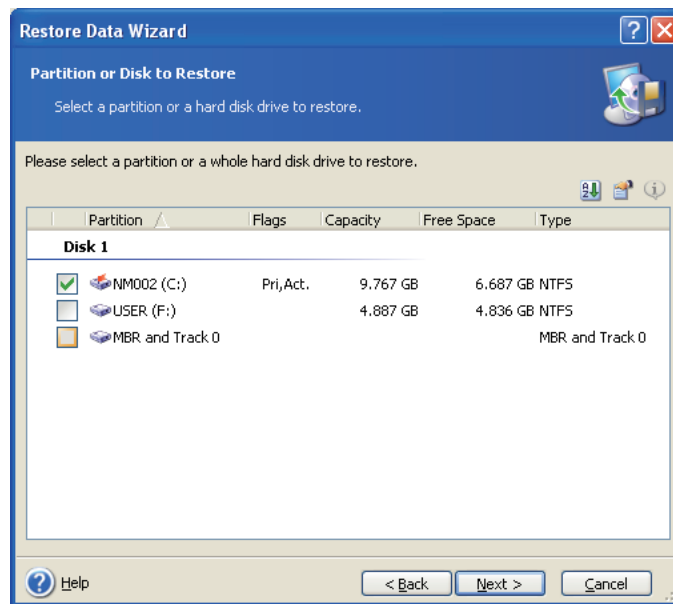


**Step 8.** Select “Restore disks or partitions,” then click **Next** button.



e5071cse1139

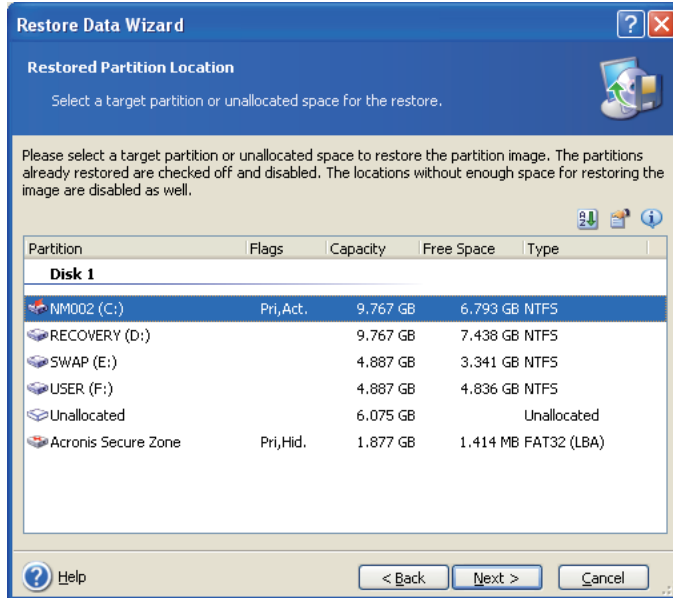
**Step 9.** Select the C drive, then click **Next** button.



e5052bse1025

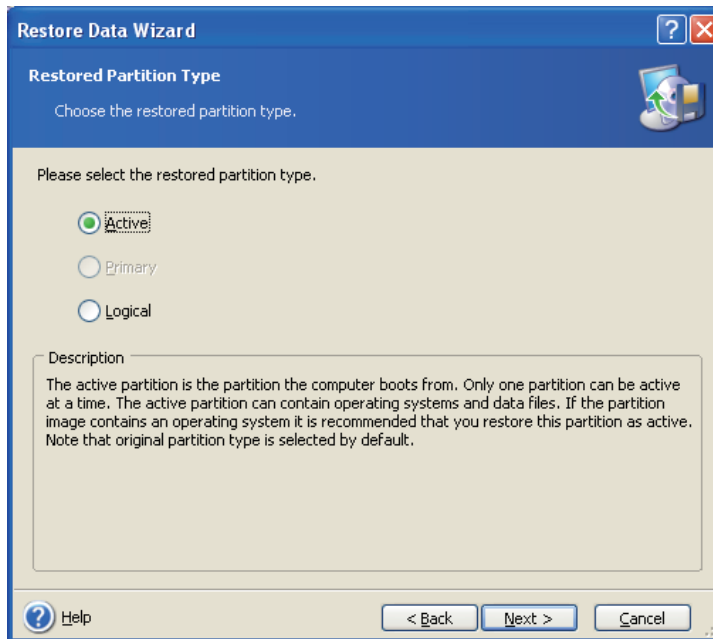
## Option Installation System Recovery

**Step 10.** Select the C drive to restore, then click **Next** button.



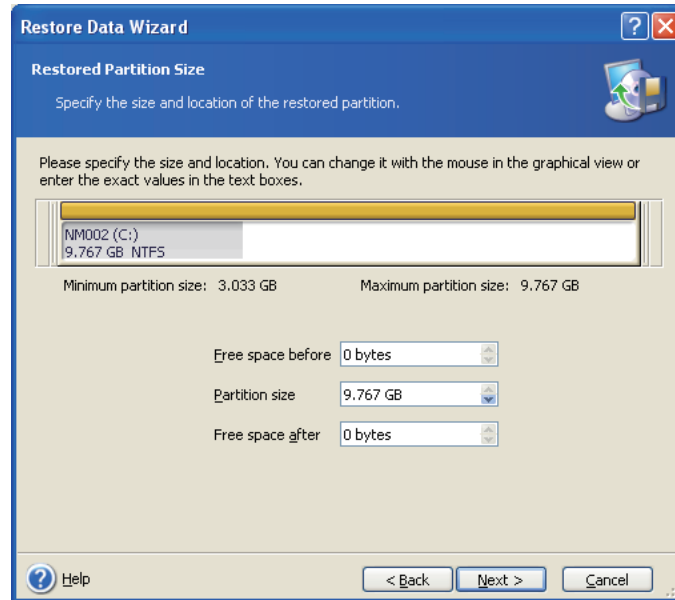
e5052bse1026

**Step 11.** Select "Active" and click **Next** button.



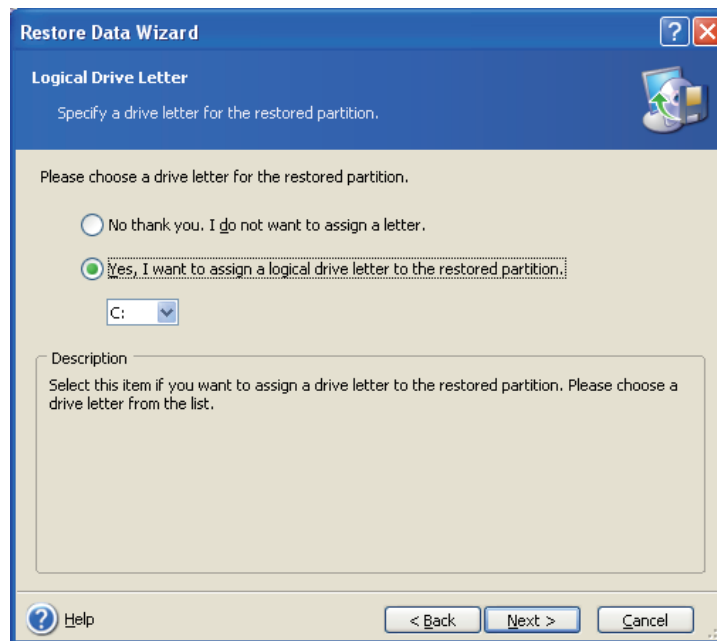
e5071cse1145

**Step 12.** Click **Next** button.



e5052bse1027

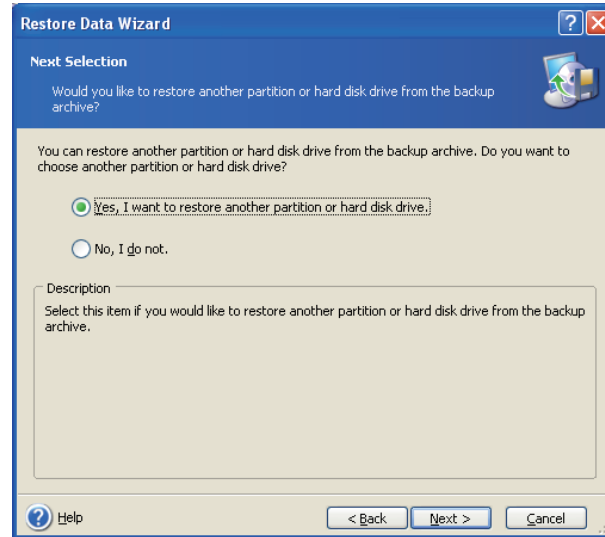
**Step 13.** Select “Yes, I want to assign a logical drive letter to the restored partition.” and click **Next** button.



e5071cse1147

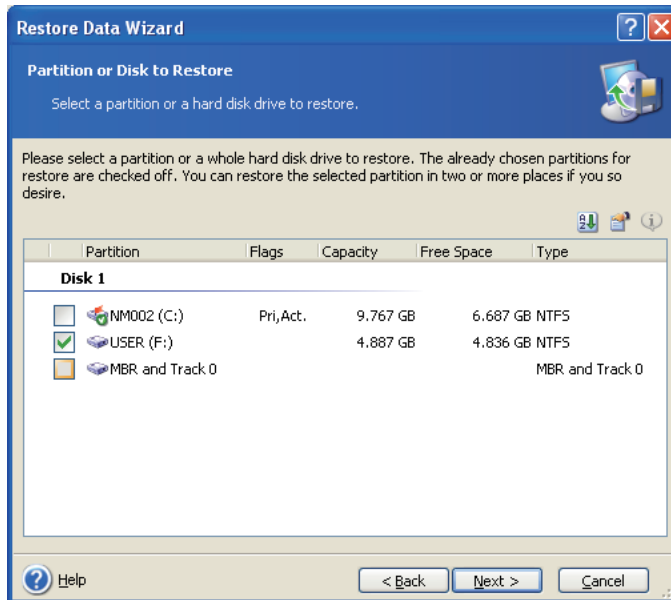
## Option Installation System Recovery

**Step 14.** Select “Yes, I want to restore another partition or hard disk drive.” then click **Next** button.



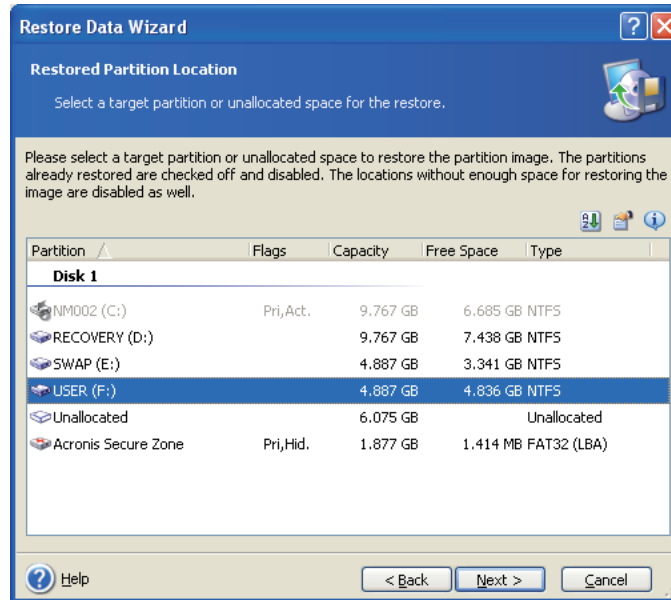
e5052bse1077

**Step 15.** Select the F drive to restore, then click **Next** button.



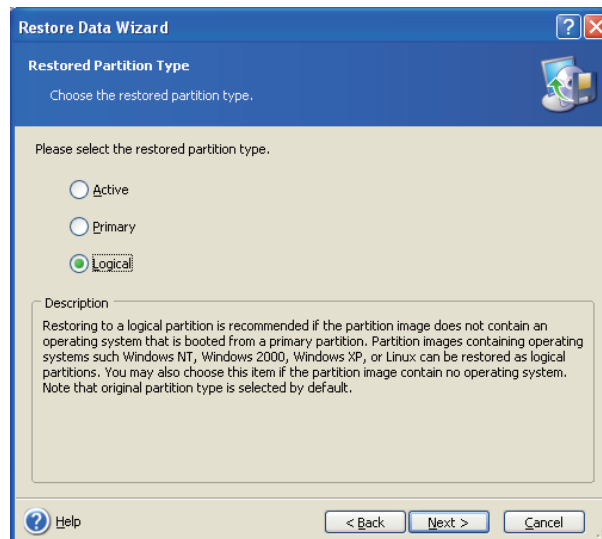
e5052bse1028

**Step 16.** Select the F drive to restore, then click **Next** button.



e5052bse1029

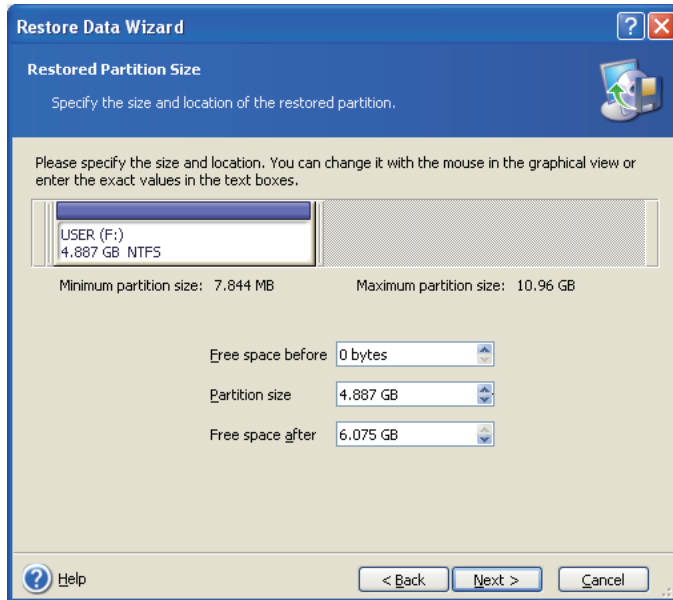
**Step 17.** Select “Logical” and click **Next** button.



e5052bse1078

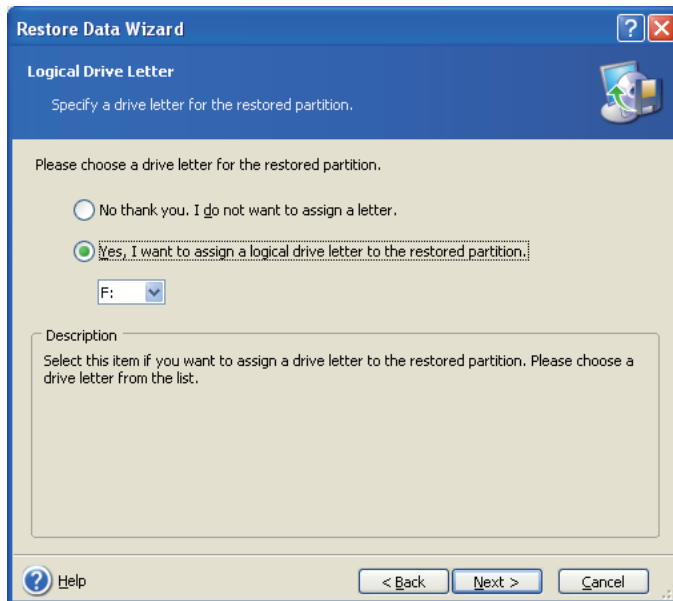
## Option Installation System Recovery

**Step 18.** Click **Next** button.



e5052bse1030

**Step 19.** Select “Yes, I want to assign a logical drive letter to the restored partition,” then click **Next** button.



e5052bse1031

**Step 20.** Select “No, I do not.” and click **Next** button.



e5052bse1079

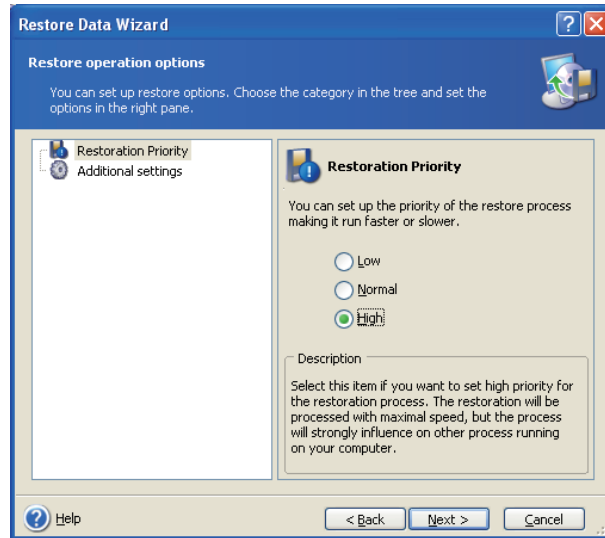
**Step 21.** Select “Set the options manually” and click **Next** button.



e5052bse1080

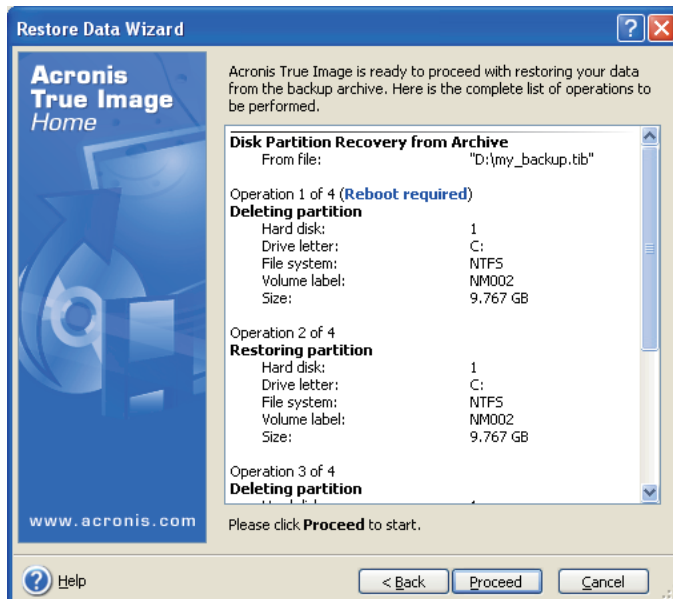
## Option Installation System Recovery

**Step 22.** Select “Restoration Priority” in the left field and “High” in the right field, then click **Next** button.



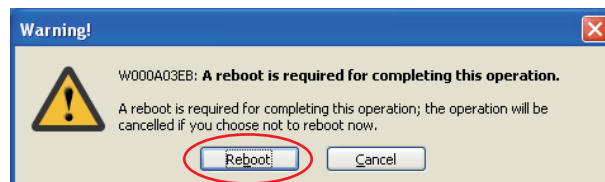
e5052bse1081

**Step 23.** Click **Proceed** button.



e5052bse1032

**Step 24.** Click **Reboot** button.



e5052bse1082



---

**CAUTION**

---

Never turn off the power during the recovery of the user backup image because doing so may cause serious damage to the E5052B.

- Step 25.** After boot up, perform “Initial Registration of E5052B” on page 34 and “Calibration of the Touch Screen” on page 39.

---

## Initial Registration of E5052B

When you start up the E5052B at the first time, you need to perform the initial registration of the Windows XP operating system of the E5052B. There are two procedures in accordance with the HDD revision.

---

**NOTE** It is not possible to check the HDD revision installed on your E5052B before Windows is booted. Therefore, you should follow the procedure which you see on the unit.

---

**NOTE** You cannot use the front panel keys during the initial registration of the E5052B therefore connect the mouse and the keyboard before turning on the power.

---

**NOTE** If you perform the following procedure incorrectly, a message asking you whether to return to the previous registration screen and perform the registration appears. In this case, follow the instruction to return to the previous registration screen.

---

### Initial Registration Procedure (HDD Revision: NM321 or above)

**Step 1.** Turns on the E5052B.

**Step 2.** The Windows XP Professional Setup wizard appears. Click the **Next >** button (Figure 2-8).

Figure 2-8

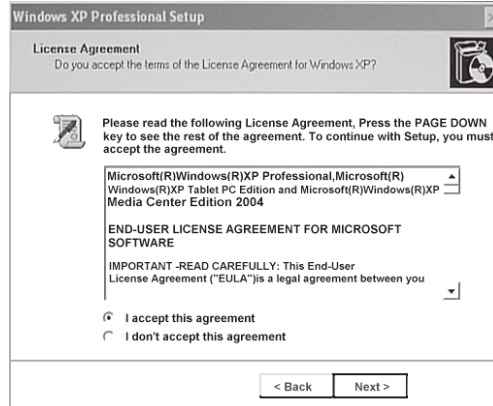
#### Windows XP Professional Setup wizard



e5071cse1073

**Step 3.** In the Windows XP Professional Setup dialog box, read the license agreement, then select the **I accept this agreement** box and click the **Next >** button (Figure 2-9).

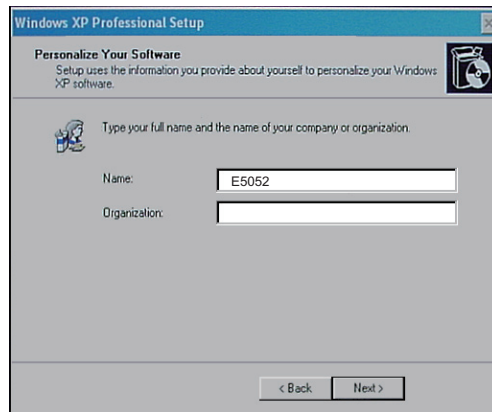
**Figure 2-9** Windows XP Professional Setup dialog box (1/2)



e5071cse1074

**Step 4.** In the next dialog box, input **E5052B** in the **Name** box. Then, click the **Next>** button (Figure 2-10).

**Figure 2-10** Windows XP Professional Setup dialog box (2/2)



e5052bse1033

**Step 5.** The E5052B restart automatically.

**Step 6.** The Agilent Recovery Image Setup screen (Figure 2-11) appears. Click OK to proceed.

Option Installation  
Initial Registration of E5052B

Figure 2-11 Agilent Recovery Image Setup Screen(1/1)



e5071cs001

**Step 7.** A progress bar appears (Figure 2-12) indicating the progress of the Recovery Image setup. The complete process takes less than 5 minutes to finish.

Figure 2-12 Agilent Recovery Image Setup Screen(1/2)



e5071cs002

**Step 8.** A message dialog box appears after the completion of the Recovery Image Setup procedure. The dialog box disappears automatically after a few seconds.

**Step 9.** E5052B firmware is executed, then the measurement display appears.

### Initial Registration Procedure (HDD Revision: NM320 or below)

- Step 1.** Turns on the E5052B.
- Step 2.** The Windows XP Professional Setup wizard appears. Click the **Next >** button (Figure 2-13).

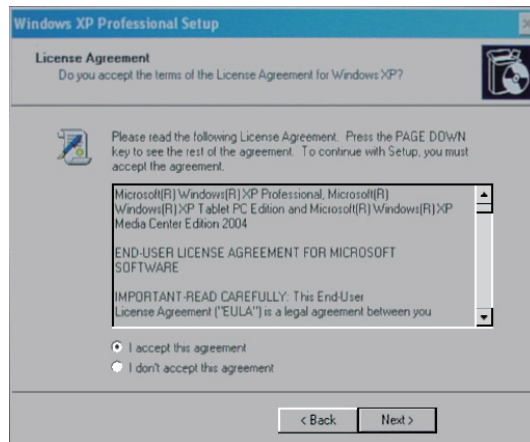
**Figure 2-13** Windows XP Professional Setup wizard



e5071cse1073

- Step 3.** In the Windows XP Professional Setup dialog box, select the **I accept this agreement** box and click the **Next >** button (Figure 2-14).

**Figure 2-14** Windows XP Professional Setup dialog box (1/2)

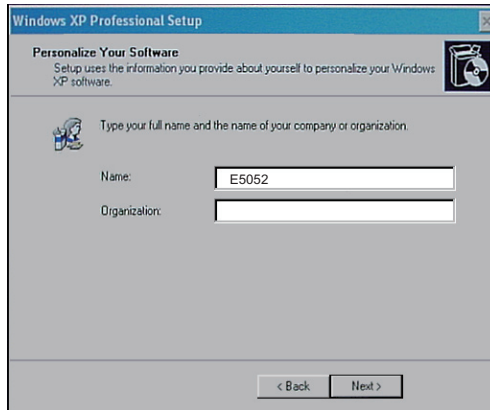


e5071cse1074

- Step 4.** In the next dialog box, input **E5052** in the **Name** box. Then, click the **Next>** button (Figure 2-15).

Option Installation  
Initial Registration of E5052B

Figure 2-15 Windows XP Professional Setup dialog box (2/2)



e5052bse1033

**Step 5.** After a while, the E5052B restarts automatically. Then, the measurement display appears.

---

## Calibration of the Touch Screen

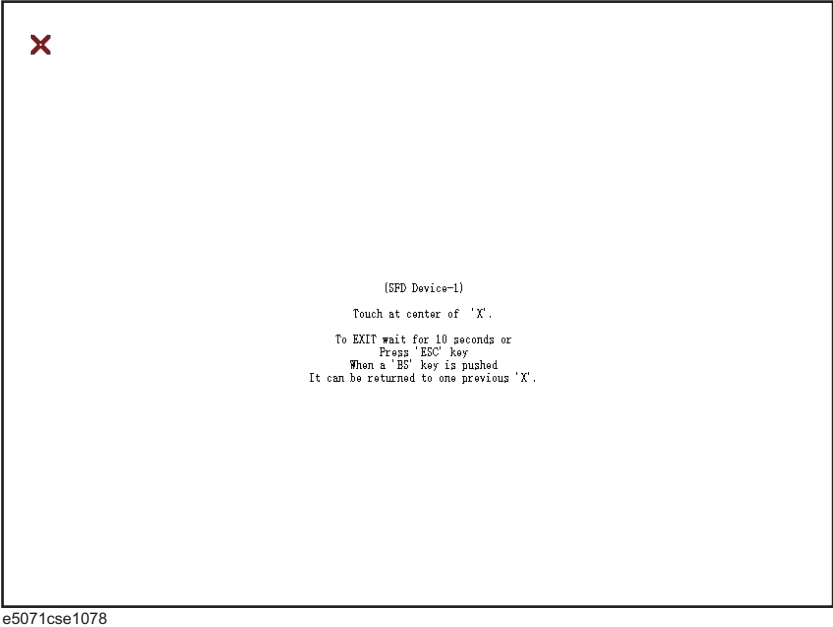
After E5052B measurement screen appears, you have to calibrate the touch screen. Follow the procedure described below to calibrate the touch screen.

- Step 1.** Press **System**.
- Step 2.** Press **Service Menu**.
- Step 3.** Press **Test Menu**.
- Step 4.** Press **Adjust Touch Screen**.

The touch screen calibration screen (Figure 2-16) appears.

**Figure 2-16**

**Touch Panel Calibration Screen**



- Step 5.** Touch the x mark on the upper left with your finger. The mark x appears also on the upper right, lower left, and lower right. Touch the x marks in that order with your finger. Touching the four locations described above with your finger automatically concludes the touch screen calibration.

---

**NOTE**

With no operation on the touch screen calibration screen for a preset time, it automatically closes and the previous measurement screen reappears.

# REGIONAL SALES AND SUPPORT OFFICES

*For more information about Agilent Technologies test and measurement products, applications, services, and for a current sales office listing, visit our web site: <http://www.agilent.com/find/tmdir>. You can also contact one of the following centers and ask for a test and measurement sales representative. 21/01/2004*

## **United States:**

Test and Measurement Call Center  
(tel) 1 800 452-4844  
(fax) 1 888 900-8921

## **Australia/New Zealand:**

(tel) (61 3) 9210-5555 (Australia)  
(fax) (61 3) 9210-5899  
(tel) (64 4) 939-0636 (New Zealand)  
(fax) (64 4) 972-5364

## **Canada:**

Test and Measurement Call Center  
(tel) 1 877 894-4414  
(fax) 1 888 900-8921

## **Asia Pacific:**

(tel) (65) 6375-8100  
(fax) (65) 6836-0252  
Email: [tm\\_asia@agilent.com](mailto:tm_asia@agilent.com)

## **China:**

(tel) 800 810-0189  
(fax) 800 820-2816

## **Europe:**

(tel) (31 20) 547-2323  
(fax) (31 20) 547-2390

## **Japan:**

Call Center  
(tel) 0120 421-345  
(tel) (81) 426 56-7832  
(fax) (81) 426 56-7840

## **Korea:**

(tel) (82 2) 2004-5004  
(fax) (82 2) 2004-5115

## **Latin America:**

(tel) (305) 269-7500  
(fax) (305) 269-7599

## **Taiwan:**

(tel) 0800 047 866  
(fax) 0800 286 331